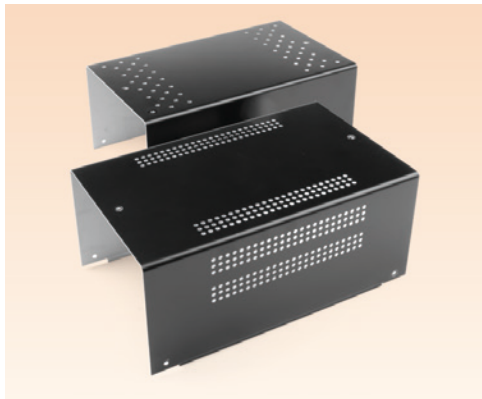
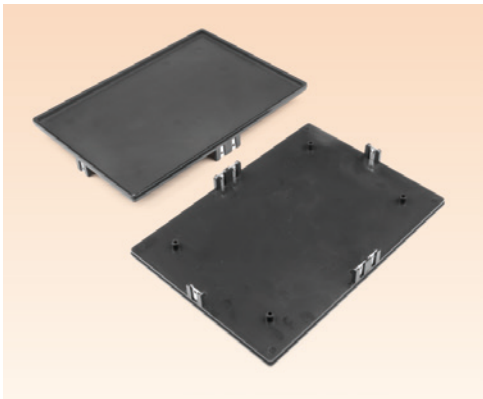
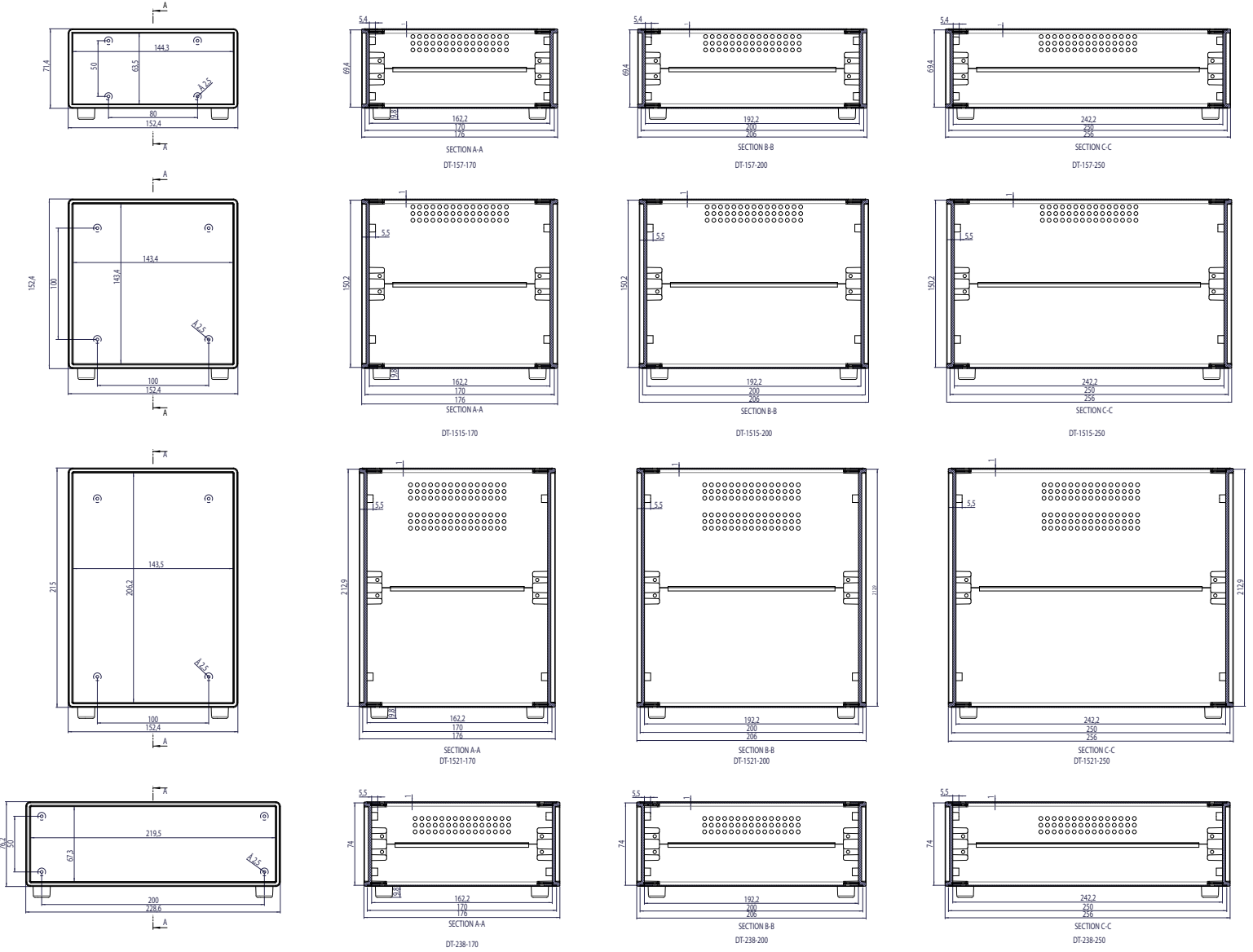




ALUMINUM PROJECT ENCLOSURES

- Classic simple design
- 1 mm body made of aluminum sheet
- Outer side is glossy painted sheet and protective filmed, inner side gray primer painted
- Plastic front and back panels
- With 4 different panel sizes and 3 depth options, 12 stock length





| Code | W (A) | L (B) | H (C) |
|-------------|-------|-------|-------|
| DT-157-170 | 152 | 170 | 71 |
| DT-157-200 | 152 | 200 | 71 |
| DT-157-250 | 152 | 250 | 71 |
| DT-1515-170 | 152 | 170 | 152 |
| DT-1515-200 | 152 | 200 | 152 |
| DT-1515-250 | 152 | 250 | 152 |
| DT-1521-170 | 152 | 170 | 215 |
| DT-1521-200 | 152 | 200 | 215 |
| DT-1521-250 | 152 | 250 | 215 |
| DT-238-170 | 228 | 170 | 76 |
| DT-238-200 | 228 | 200 | 76 |
| DT-238-250 | 228 | 250 | 76 |

